

## HEAVY DUTY WEATHERRPROOF TELEPHONE PT-IPFS1

Weatherproof, Aluminum alloy die-cast housing



### Features

- Size: 320\*220\*120 (mm)
- Weight: 4.5KG
- Heavy gauge cast aluminum housing
- Excellent waterproof and dustproof
- Durable stainless steel keypad
- Scalable elastic handset
- Custom colors and silk screen logo are available
- Metal button Alpha-numeric keypad, DTMF tone dialer, hearing aid armored cord handset, and a die casted chrome plated mechanical hookswitch and cradle.
- Support maintain and upgrad remotely..
- Support POE power supply, or AC/DC powered

The PT-M-FSP series have three access methods

- Analog
- VoIP (SIP Protocol)
- GSM/CDMA

### Applications

- Tunnel
- Mining plant
- Chemical plant
- Steel Plant
- Power plant

### Specifications

Functional module	Technical specification
Protection grade	IP67
Ambient temperature	-40°C ~ 70°C
relative humidity	≤95%
Atmospheric pressure	80 ~ 106KPa
Feed -voltage	48-60V
Operating current	15mA-90mA
Call transmission index	SLR≤12, RLR≤-1, STMR≥10
Environmental noise	≤115dB
degree of distortion	≤2%
Ringng level	≥65dB

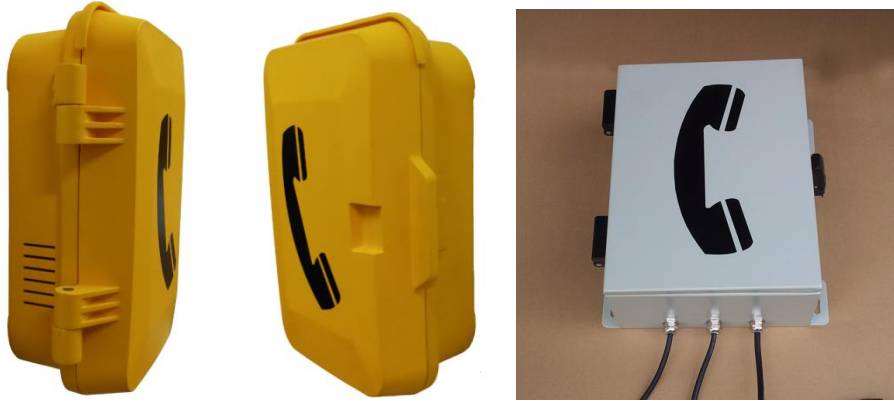


PPST Technology Co.,LTD  
[www.waterproof-phone.com](http://www.waterproof-phone.com)

*Specialized in emergency telephone solution*  
FengHuang first industry park,fuyong town,ShenZhen  
Tel:86-075589487736 Fax:86-075533671258

DC impedance	< 500Ω
Insulation resistance	> 50MΩ
Button lifetime	>500.000 times
Fork spring lifetime	>500.000 times
Power supply method	line for power supply≥16 mA
Installation method	wall hanging

## Related products



## Drawing



PPST Technology Co.,LTD  
[www.waterproof-phone.com](http://www.waterproof-phone.com)

*Specialized in emergency telephone solution*  
 FengHuang first industry park, fuyong town, ShenZhen  
 Tel:86-075589487736 Fax:86-075533671258